

[406_{v3}] Mural Revela

CONDITIONS

SUBSTRATES

ACCESSORIES

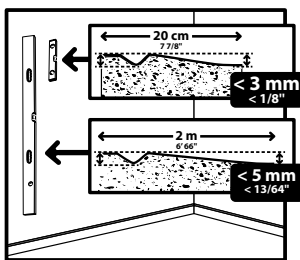
INSTALLATION

LAYING CONDITIONS

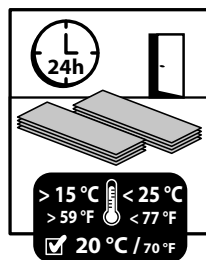
SUBSTRATE EVENNESS	Flatness requirement : < 5 mm / 2 m ruler and < 3 mm/20 cm ruler	Flat, clean, intact, dry, cohesive and non-greasy substrate. Vertical trueness < 5 mm/2.5 m ruler Unevenness < 3 mm
STORAGE	At least 24 hours before installation	Store panels and tiles flat, in the room where they will be installed
LAYING TEMPERATURE	+ 15°C < T < + 25°C	Ideally 20°C
PERIMETER EXPANSION GAP	1 mm/m on each side	1 mm per linear meter of laid wall covering, on each side of the covered surface
DIRECT SUNLIGHT (BAY WINDOW, SKYLIGHT, SKYDOME, ETC.) OR OTHER HEAT SOURCES	Wall temperature < 60°C	Do not install when wall temperature may exceed 60 °C (for example, around a fireplace, near a stove, an oven, an electric heater, etc.)
VERANDA/CONSERVATORY	Prohibited	
FIRST USE	Immediately after installation, except for humid rooms: 24 hrs after finishes installation	

USAGE CONDITIONS

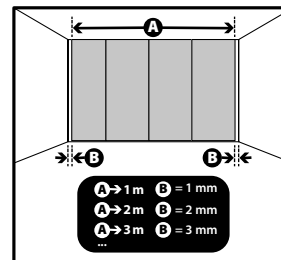
USAGE TEMPERATURE	+ 8°C < T < + 60°C	
ATTACHING ACCESSORIES		Drill holes through the tiles or panels and use suitable screws and plugs to attach the accessories securely in the wall behind. In a humid room (e.g. bathroom), it must remain watertight (make a watertight seal).
MAINTENANCE		Ordinary household cleaning products: damp cloth or mild cleaning agent. Do not use abrasives, aggressive substances or chlorine-based cleaning products. The use of solvent-based cleaners is not recommended.



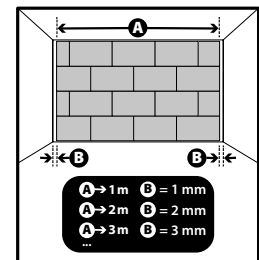
SUBSTRATE EVENNESS



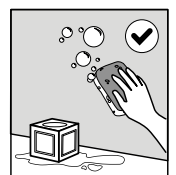
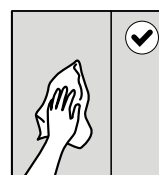
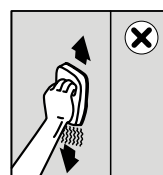
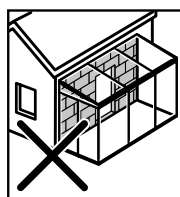
STORAGE



PERIMETER EXPANSION GAP



HEAT EXPOSURE



MAINTENANCE

[406_{v3}] Mural Revela

CONDITIONS

SUBSTRATES

ACCESSORIES

INSTALLATION

SUBSTRATE

CONDITIONS

For installing this wall covering

Concrete, plaster or cement-based smoothing compound, wall partition or lining, gypsum plasterboard	✓	If the product is to be installed in a humid room (bathroom, etc.), ensure that the substrate is suitable for usage in humid area and that it has been protected against moisture in shower or bathtub areas in accordance with the local regulations.
Tiled wall	✓	<p>If there are missing or non-adherent tiles, or in case of unevenness > 3 mm, apply appropriate patching to make the surface even or use Wedi-type leveling panels of the required thickness.</p> <p>If the product is to be installed in humid rooms (bathroom, etc.), ensure that the substrate is suitable for usage in humid area and that it has been protected against moisture in shower or bathtub areas in accordance with the local regulations.</p> <p>Old asbestos tiled surface: installation must be carried out in compliance with the regulations in force.</p>
PVC	✗	Prohibited

For information about the product and its areas of use, see the Technical Data Sheet: www.gerflor.com

[406_{v3}] Mural Revela

CONDITIONS

SUBSTRATES

ACCESSORIES

INSTALLATION

TOOLS

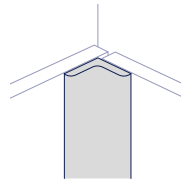
Cutter - Tape measure - Spirit level
 Manual or electric glue gun – Romus Ref: 93058
 Non-rebound hammer – Romus Ref. : 94964
 Hacksaw if using profiles
 Hole-saw to drill the panel/planks if necessary

GLUE AND SEALANT

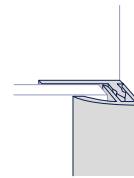
MS Polymer adhesive (e.g. Bostik MSP107 or Mapeflex MS45), consumption: approximately one cartridge of 290 ml per 2 m² MS Polymer watertight sealant (for areas that are prone to water splashes).
 Gerflor recommends using a transparent watertight sealant (e.g. Bostik MSP 106 or Rubson FT101)

FINISHES

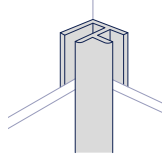
Gerflor offers several optional corner and finishing profiles:



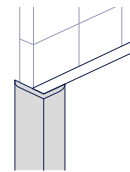
Aluminium internal angle (ref. 06570001)
 Black aluminium internal angle (ref. 06570002)



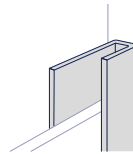
Aluminium click finishing profile (ref. 06430001)



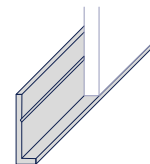
Aluminium universal angle (ref. 06440001)
 Black aluminium universal angle (ref. 06440002)



Aluminium L-profile external angle (ref. 06530001)



Aluminium U finishing trim (ref. 06490001)
 Black aluminium U finishing trim (ref. 06490002)



Aluminium start trim (ref. 06520001)

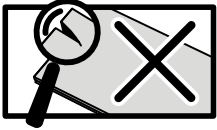
[406_{v3}] Mural Revela

CONDITIONS

SUBSTRATES

ACCESSORIES

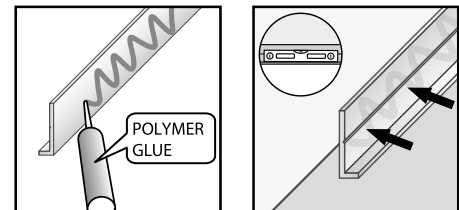
INSTALLATION



The floor covering should be examined prior to installation for any visible defects. If there are any visible defects, please notify GERFLOR and do not begin installation without its prior approval.

- Clean and degrease the substrate prior to installation
- Make sure the back side of the tiles/panels are not dusty. If necessary, degrease them with alcohol.
- Installation with a starting profile (optional)

- Cut the start trim to the required length using a hacksaw, then glue it to the base of the wall using an MS polymer adhesive applied to the back of the profile. Check and adjust horizontality using a spirit level.
- Other profiles (finishing profile, universal angle) can also be positioned, depending on the choice.

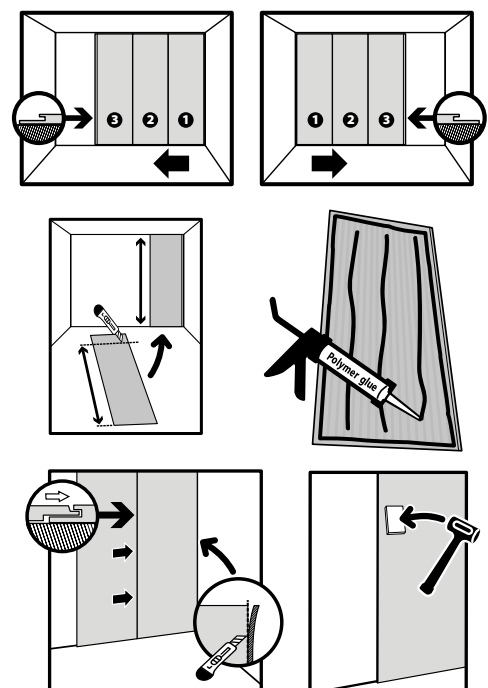


- Panels and tiles can be cut to the required size easily (cutter, saw, or guillotine for the tiles). If necessary, do the cutouts to fit around the water supply, electrical points, etc..., before installation.

INSTALLATION IN AREAS THAT ARE NOT PRONE TO WATER SPLASHES (I.E. AREAS THAT ARE NOT AROUND A SHOWER OR BATHTUB)

PANEL INSTALLATION

- Panels can be installed from right to left or from left to right, ensuring the groove is positioned on the correct side. If installing from right to left, position the panel with the grooved edge on the left. If installing from left to right, position the panel with the grooved edge on the right
- Cut panel to the required size
- Using a cutter, cut off the tongue that will be touching the wall
- Apply MS polymer glue to the back of the panel (see diagram opposite)
- Position the panel leaving an expansion gap of 1 mm per meter of panels installed. The use of suction cups can be useful to facilitate the positioning of panels in a narrow environment.
- Press down by hand then tap over the entire surface using a synthetic non-rebound hammer
- Install the next panel: apply MS polymer glue to the back, then insert the tongue into the groove of the already installed panel.



Gerflor

[406_{v3}] Mural Revela

CONDITIONS

SUBSTRATES

ACCESSORIES

INSTALLATION

TILE INSTALLATION

- Tiles can be installed horizontally or vertically
- If installing horizontally, start the installation on the right-hand side of the wall, and always position the tiles with the grooved edges on the left and on the top. Rows are therefore installed from right to left
- If installing vertically, start the installation on the left-hand side of the wall, positioning the grooved edges on the right and on the top. Rows are therefore installed from left to right.

First row :

Depending on the width of the wall and the desired look (same size cuts at both ends of the wall), choose whether or not to start with a whole tile..

- Using the cutter, cut off the tongues that will be touching the floor and the walls
- Apply MS polymer glue to the back side of the tile (see diagram opposite)
- Position the tile against the wall leaving an expansion gap of 1 mm per meter of tiles installed
- Check the horizontality using a spirit level and adjust if necessary
- Press down by hand then tap over the entire surface using a synthetic non-rebound hammer
- Install the next tile: apply MS polymer glue to the back side, then insert the tongue into the groove of the already installed tile and press down
- Make sure that the tiles are always perfectly aligned with each other in order to obtain a perfect joint and to avoid any offset when installing the next row.
- Repeat these steps until the end of the row. Cut the last tile of the row to the required size. Depending on its size, the remaining piece of tile may be used to start the next row.

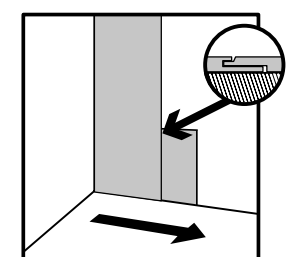
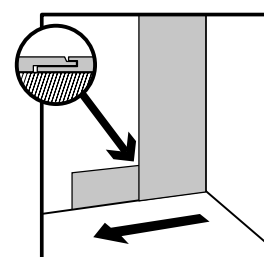
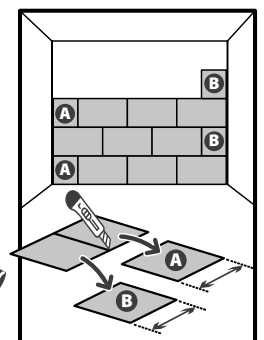
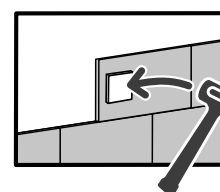
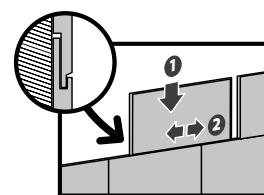
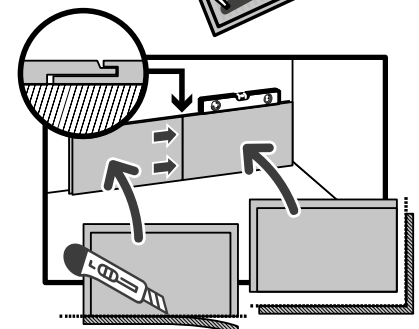
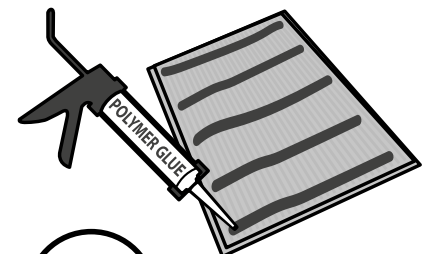
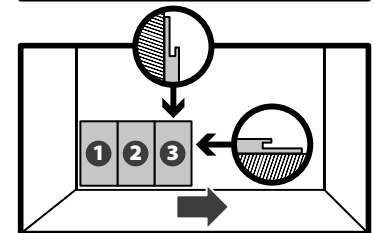
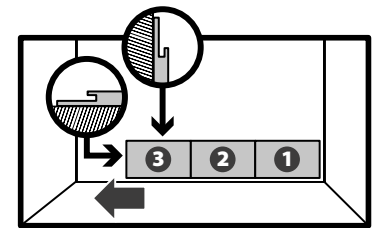
Next rows :

Tiles can be installed in straight lines (aligned joints) or in staggered joint (offset by half a tile, diagram opposite)

- Continue to glue and then assemble the tiles in the same way as the first row, inserting the vertical and horizontal tongues into the grooves of the previously installed tiles
- Wipe off any traces of fresh glue with a dry cloth

ASSEMBLING PANELS AND TILES

- Two configurations are possible for assembling tiles with panels: panels installed on the left-hand side of the wall + tiles in a vertical position or panels on the right-hand side of the wall + tiles in a horizontal position (aligned joints only)
- Always install the panels first, and always insert the tile's tongue into the panel's groove



Gerflor

[406_{v3}] Mural Revela

CONDITIONS

SUBSTRATES

ACCESSORIES

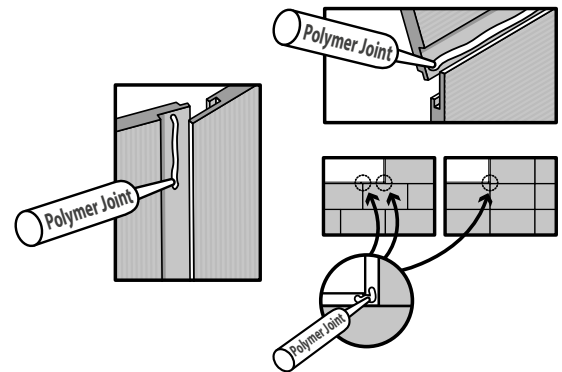
INSTALLATION

INSTALLATION IN AN AREA PRONED TO WATER SPLASHES (AROUND A SHOWER OR BATHTUB)

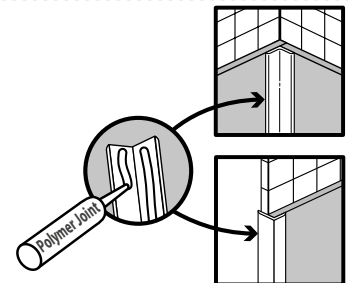
- Ensure that the substrate is suitable for usage in humid area and that it has been protected against moisture in shower or bath areas in accordance with the local regulations.
- If installation is realised without starting profile, apply a cord of watertight MS polymer sealant all along the base of the wall
- If installation is realised using a starting profile, apply a line of watertight MS polymer sealant to the inner part of the profile's base, as well as the inner parts of the finishing or universal angle profiles if used, before installing the panels/tiles

- Installation and assembling of tiles or panels as recommended above, making sure to:

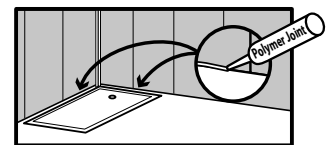
- Apply a 3 mm width line of MS polymer watertight sealant on the back of the tongues of the tile or panel to be installed, before inserting it into the previously installed panel or tile
- Apply MS Polymer sealant at the tile/tile and tile/panel joining points (see diagram opposite)



- Angle handling: install corner or angle finishing profiles using MS polymer sealant in the corners of the exposed area



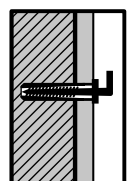
- Apply a cord of MS polymer sealant along the bottom of the tiles or panels (where they join the shower tray or bathtub)



FINISHES

- If necessary, install angle profiles by gluing them using MS polymer glue
- Attaching accessories (hooks, mirrors, etc.): drill holes into tiles or panels and use suitable screws and plugs to secure them to the wall behind.

If installing in high humidity rooms (bathroom, etc.), apply MS polymer sealant around the edge of the hole to ensure it remains watertight.



Gerflor